

Case Study:

For:



Design Build by:



Custom Architectural
Millwork by:



**Every GC and Design-Build firm
needs a millwork crew that can deliver.**

**For over 30 years, we've worked behind the scenes—and in the field—
supporting contractors across Florida and beyond.
We understand your deadlines, your standards, and your clients.
Our job is to make you look good—and we take that seriously.**

What Sets Us Apart

- **In-house custom craftsmen and installation crews trained for financial institution environments**
 - **Dedicated project managers who speak your language and stay one step ahead**
 - **On-time, built-to-spec delivery—no surprises**
- **Clean, professional installers who work weekends, after-hours, and leave the site turnkey**
 - **We build the punch list ourselves—and knock it out before it ever reaches your desk.**

‘Millwork You Can Bank On’

Millwork You Can Bank On

- **Heritage craftsmanship, four generations strong**
- **Responsive, respectful, and refreshingly easy to work with**
 - **Trusted by GCs across the Southeast**
 - **Seamless integration with your workflow**
- **Ready when you are—whether it's a fast-turn refresh or a multi-branch rollout.**



**USF CU Citrus Park branch is located at:
7919 Gunn Hwy
Tampa, FL**

Jan. 2025

USF CU Opens New State-of-the-Art Branch in Citrus Park

Located conveniently in the heart of Citrus Park, this beautiful new branch has a state-of-the-art lobby, a speedy drive-thru and offers the full suite of services USF CU members know and love, from everyday banking to loans and financial education.

Designed with the Citrus Park Community in Mind

For us, the Citrus Park branch is more than just a new building—it's a reflection of our commitment to tailoring our services to the unique needs of the communities we serve.

With a significant Hispanic population in Citrus Park, the branch will feature bilingual staff, financial wellness programs in Spanish, and resources designed to empower individuals and families.

“Our Citrus Park branch is more than a place to bank—it's a hub for connection and opportunity,” said Richard Sellwood, COO of USF Credit Union. “We're proud to tailor this location to reflect the rich culture and needs of the Citrus Park community, particularly its vibrant Hispanic population. This is about making financial services more accessible, inclusive, and impactful.”

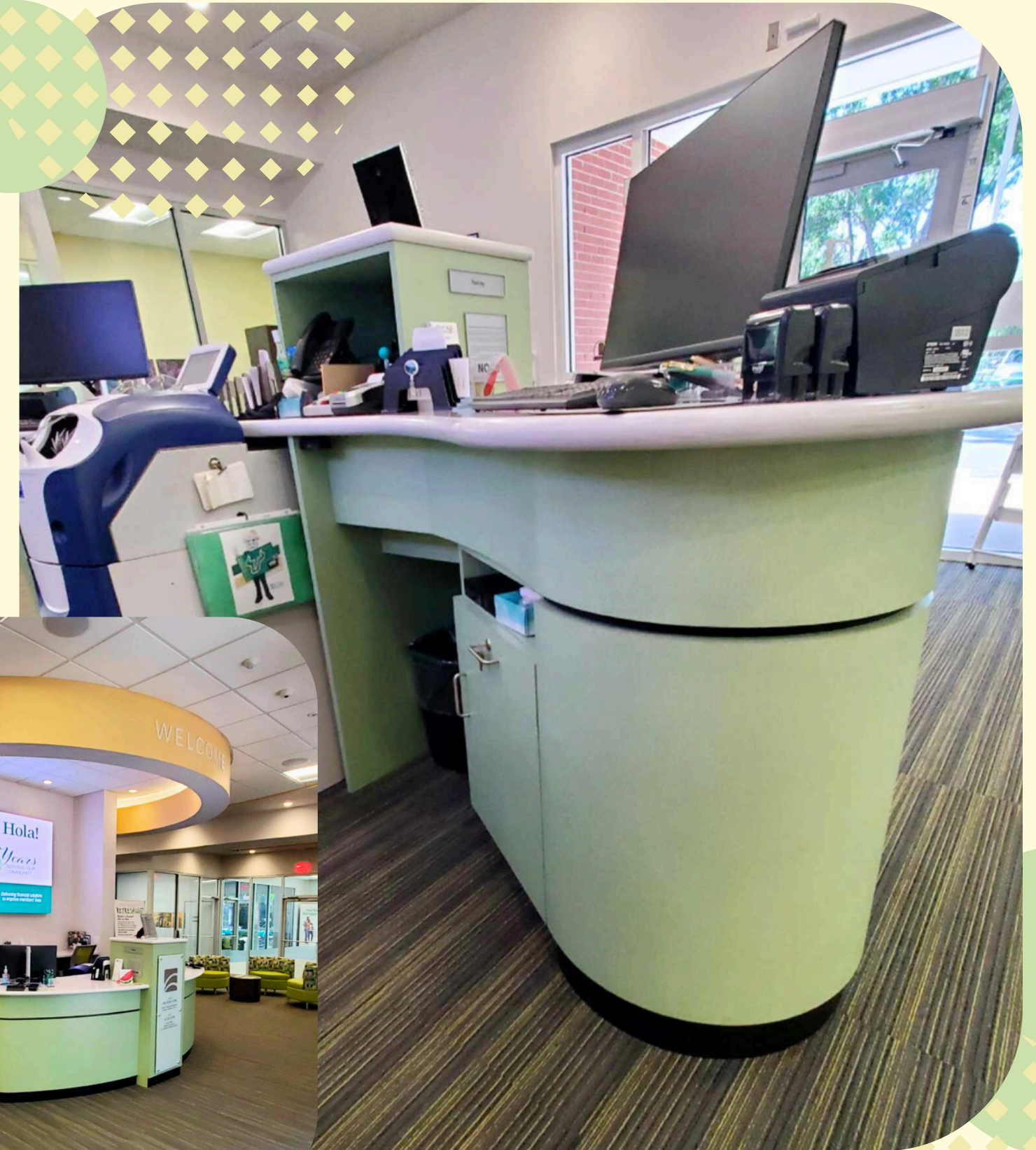
“We're excited to offer something truly special here in Citrus Park, We invite everyone to visit, connect, and see what makes USF Credit Union different.”



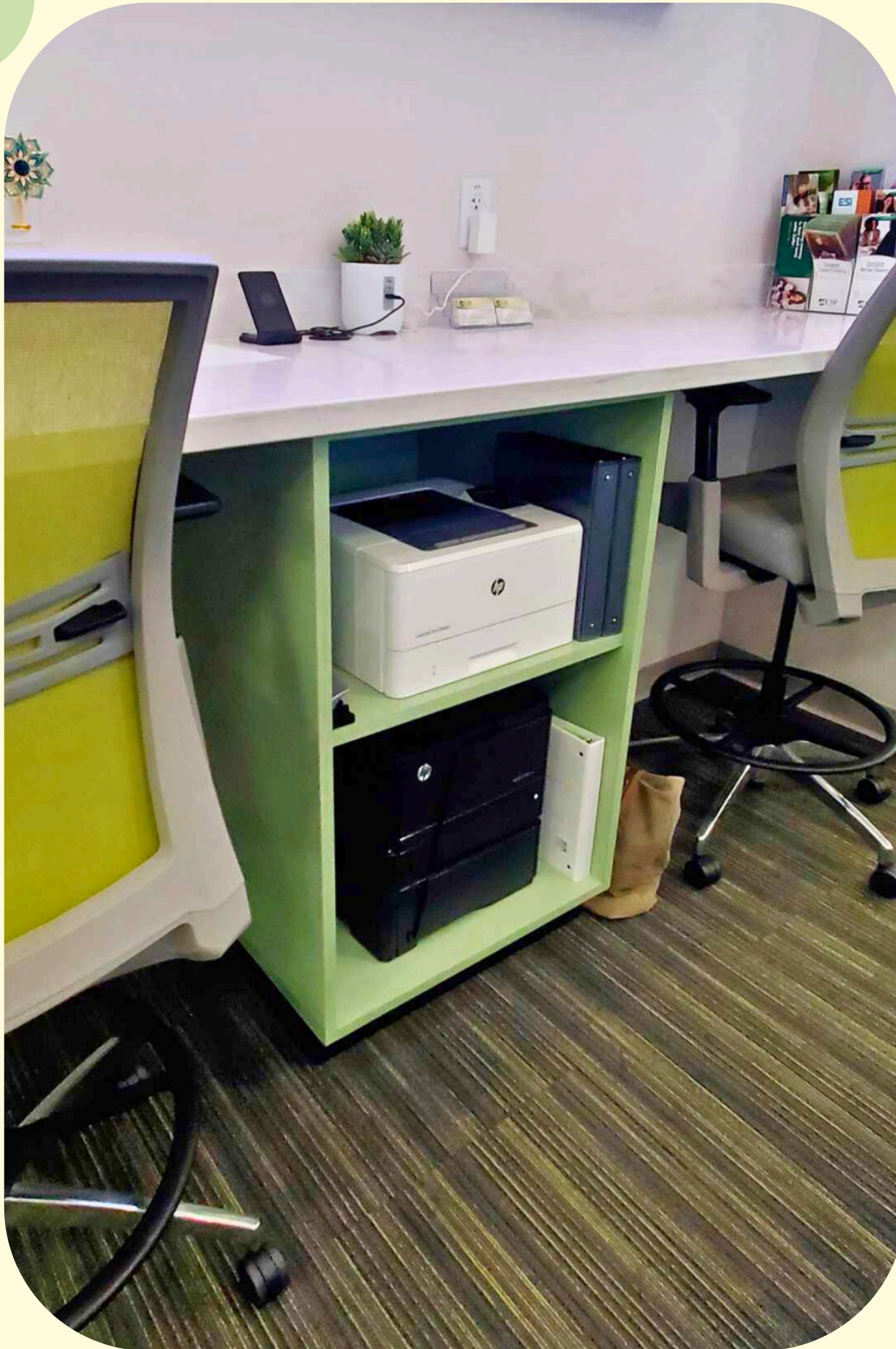


**“This Company Is Top Notch.
You cannot go wrong with them on
your project of any size or complexity.”**

**– B.P.
Design Build Solutions**



This branch features a precision-built teller pod and transaction area that creates a welcoming environment for members.



**Custom Millwork
elevates and
reinforces
brand identity.
USF signature
colors are found in
elements of our
fixtures
throughout the
branch.**





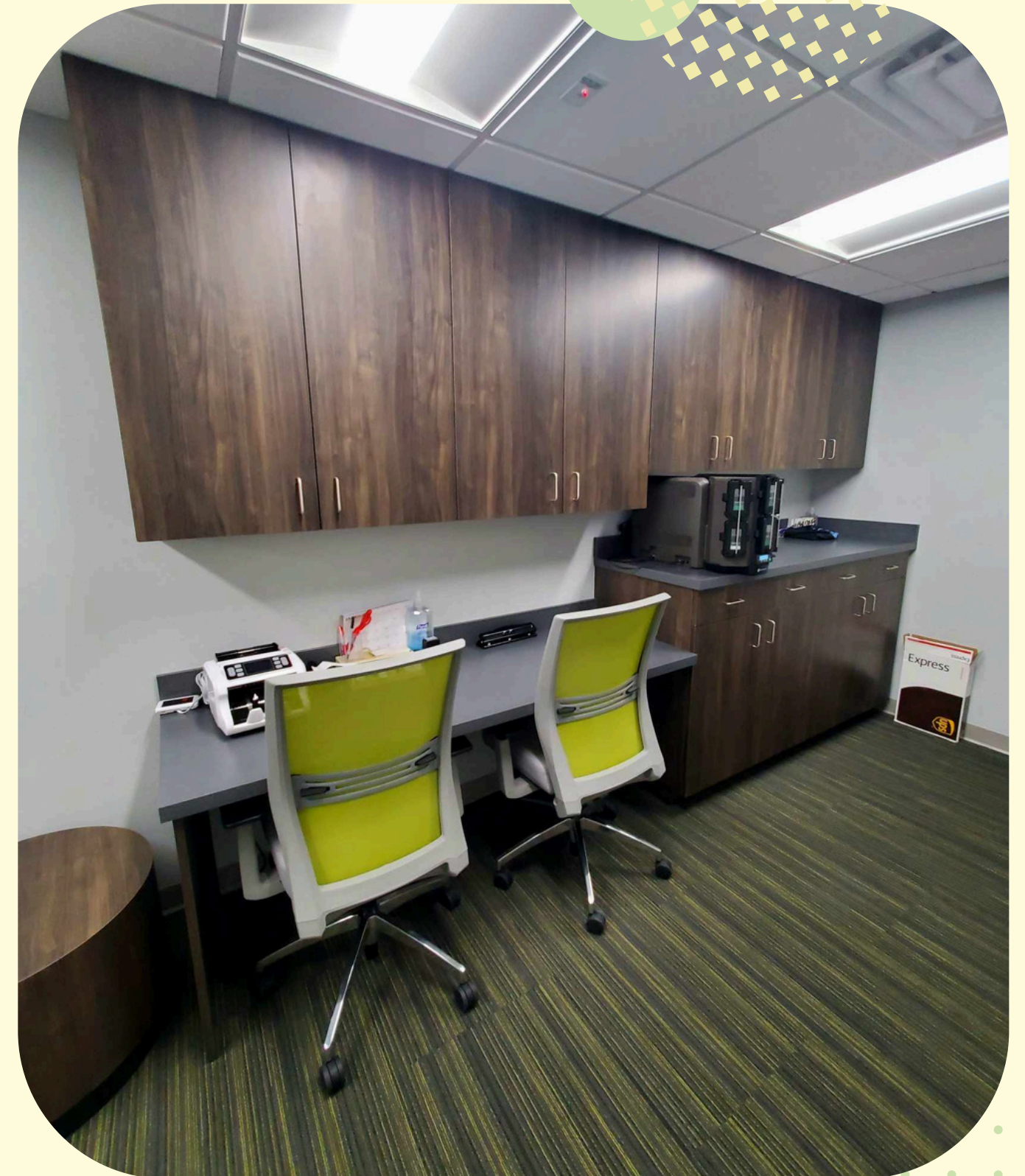
**Our projects are
Installed by our team of
in-house professional
craftsmen who
understand the
banking environment.
You have a dedicated
PM on every job.
Our trusted crew
works off-hours,
holidays, and with
utmost care—ensuring
branches are clean,
safe, and business-
ready, on time.**



Private Spaces, Elevated
Interior office millwork supports privacy, professionalism, and functionality.
It is crafted to meet the daily demands of a modern financial institution.

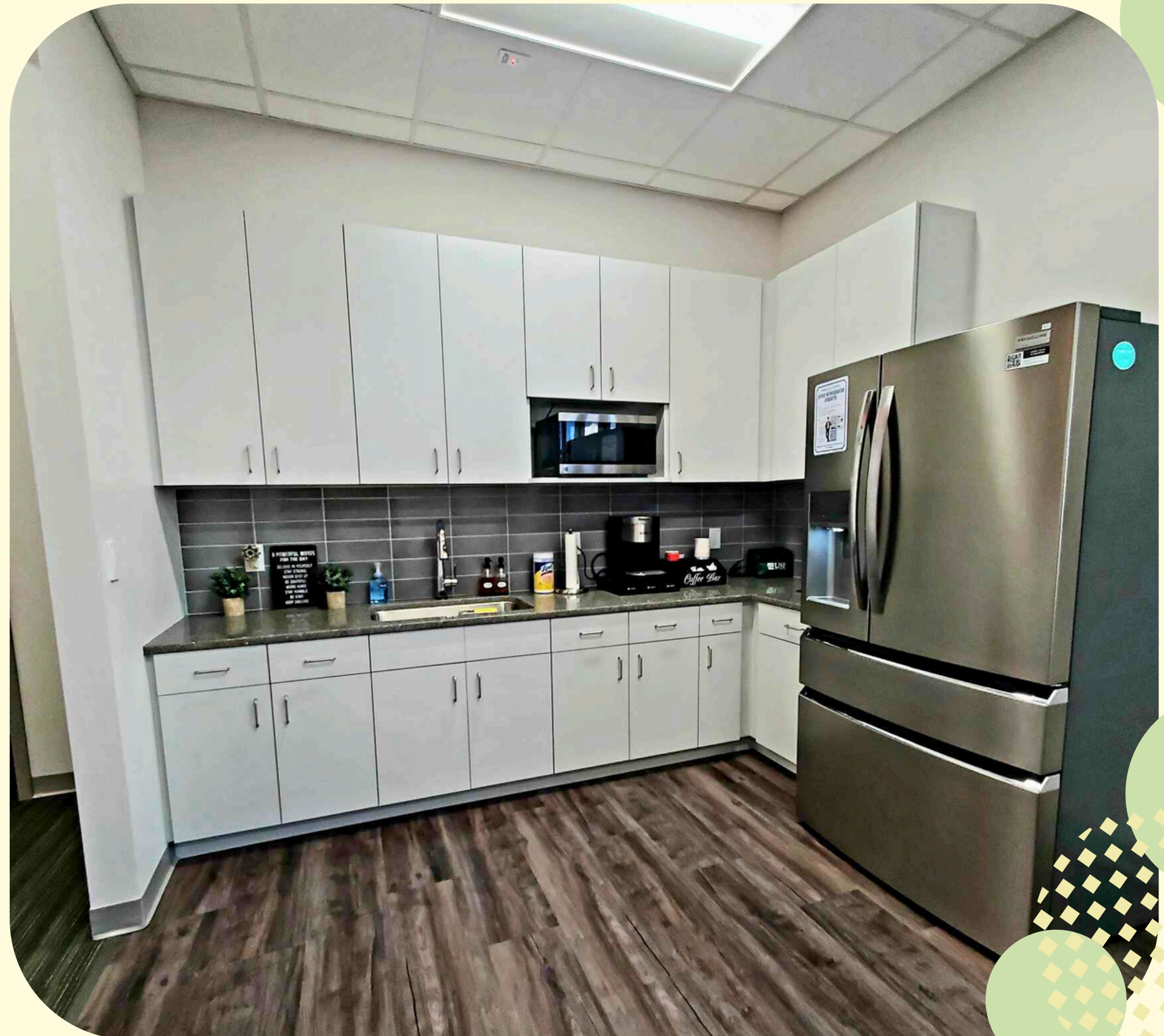


**More Specialty Millwork
Designed
for Customer Uses & Staff Functionality**



Comfort Meets Craftsmanship
The best breakrooms are a blend of utility, beauty and durability.

Millwork for Employee Areas



**Built on Trust. Ready to Collaborate.
Let's talk about your next project.**



Darcy Psihos, V.P.
Business Development
727-741-0404

Darcy@AtlanticCustomWoodcraft.com

‘Millwork You Can Bank On’

ATLANTIC
CUSTOM WOODCRAFT CORPORATION

www.AtlanticCustomWoodcraft.com